

ATLITE



PC2 Polycarbonate

Polycarbonate Emergency Unit
Incandescent Lamps

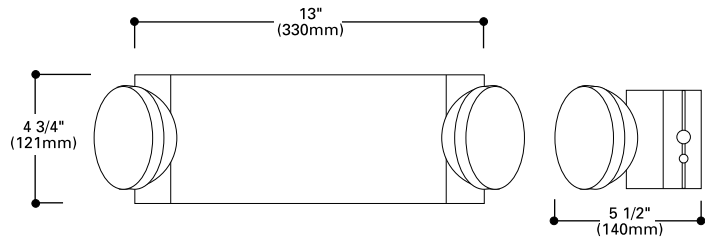
EMERGENCY LIGHTING

- Dual voltage input 120/277 VAC , 60Hz
- Line-latching, solid state voltage and current limited charger, solid state transfer
- Brownout circuit, low voltage disconnect, overload/short circuit protection, test switch/ power indicator light
- Push-in AC power connectors facilitate installation
- Designer white textured finish standard; black finish optional
- All components are injection molded, color stable, high impact UL94-5V rated polycarbonate material
- Components are of snap-fit construction to facilitate under 2-minute installation
- Cutouts provided in housing for surface conduit attachment
- Wall or ceiling mount applications
- Universal J-box knockout pattern with keyhole knockout slots
- Sealed maintenance-free, long life lead calcium battery
- Complies with UL 924, Life Safety NFPA 101, CSA certified, Damp location listed, EC/OSHA, most state and local codes

DESCRIPTION

The PC2 Polycarbonate Series is the ideal choice where simple installation and a thermoplastic housing are required. The designer white textured finish and contemporary round corner styling allow it to blend with any decor. Snap-fit construction and push-in AC connectors, giving an under 2-minute installation time, make this the fastest installed unit on the market today. Both lighting heads are fully adjustable, and a variety of battery capacities satisfies a wide range of applications , including damp locations.

DIMENSIONS



ORDERING INFORMATION

Catalog No.	Capacity in Watts (Hours)				DC Voltage	Wattage	Lamp Type	Specify Housing for all models
	1.5	2	3	4				
PC2-10	10.8	7.2			6	5.4	Incandescent	WH White
PC2-27	27	24	18	14	6	9 ⁽¹⁾	Incandescent	

⁽¹⁾ 9 watts available for remote use. Full load of 27 watts will run for 90 minutes

OPTIONS: Add to Catalog No.

Description	Code
Voltmeter*	V
Ammeter*	A
*(Provision for one meter only)	
Self-diagnostics	SD
Laser Option Installed	L*
Laser Option installed with pointer supplies	LP*

* See page 40 for time-delay selection.

ACCESSORIES

Description	Code
Wire Guard	WG-1